



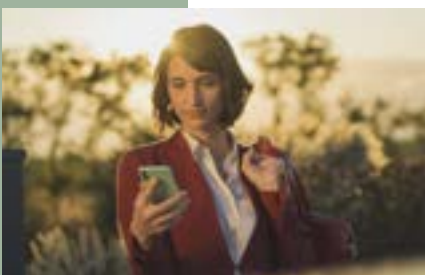
Designed to move.

Product advantages

- 01 Plug 'n' Drive
- 02 Intelligent charging
- 03 Ease of use
- 04 Safety & control
- 05 Full integration
- 06 Complete flexibility

Whether at home or on the go, with or without a photovoltaic system, powering your electric car with renewable energy will always give you the best value. The Fronius Wattpilot is providing this in more and more countries with variable energy tariffs. The intelligent charging solution charges your electric car with surplus energy (if available) from your own photovoltaic system and the cheapest grid current. And it does all this automatically, sustainably, anywhere. **It's about e-mobility that drives us all forward. Fronius Wattpilot. Designed to move.**

The charging station for electric cars



01 Plug 'n' Drive

Operating the Fronius Watto pilot could not be easier: Simply plug it in and start charging.

02 Intelligent charging

As the owner of a photovoltaic system, you can be sure that the Fronius Watto pilot will charge your electric car with your own surplus energy (if available) or alternatively with grid current. This avoids load peaks while still reliably supplying the entire household.

03 Ease of use

Convenient control using the buttons on the Watto pilot itself or via a smartphone/tablet: With the Fronius Solar:watto pilot app, you can operate both versions of the Fronius Watto pilot and adjust the settings to suit your personal requirements.

04 Safety & control

You can create up to ten user profiles for each Fronius Watto pilot. Access to the Fronius Watto pilot can be secured by RFID chip or card, protecting it against misuse, including in public areas. The use of a chip or card also enables a detailed presentation of all charging data for each user.

05 Full integration

Conveniently for owners of photovoltaic systems, the Fronius Watto pilot can be seamlessly integrated into the Fronius Solar. web app. This gives you an overview of all components in your photovoltaic system at all times and enables you to monitor the use of all self-generated solar energy.

06 Complete flexibility

The Fronius Watto pilot can be used with any electric car. The Fronius charging solution is compatible with all makes of vehicle and you can continue to use it unimpeded even if you change your vehicle.

The Fronius Watto pilot can be easily integrated into Solar.web and provides a complete overview of energy usage.





Fronius Wattpilot is available in four versions:

- Fronius Wattpilot Go 11 J
- Fronius Wattpilot Go 22 J
- Fronius Wattpilot Home 11 J
- Fronius Wattpilot Home 22 J

Technical data

		Wattpilot									
		Go 11 J		Go 22 J		Home 11 J		Home 22 J			
		1-phase	3-phase	1-phase	3-phase	1-phase	3-phase	1-phase	3-phase	1-phase	3-phase
Input data	Maximum charging power	kW		3.68	11	7.36	22	3.68	11	7.36	22
	Grid configurations			TT / TN / IT		TT / TN / IT		TT / TN / IT		TT / TN / IT	
	Grid connection			CEE16 30 cm incl. neutral conductor		CEE32 30 cm incl. neutral conductor		5-pin cable 180 cm incl. neutral conductor		5-pin cable 180 cm incl. neutral conductor	
	Optional adapters			CEE32 (red) / CEE-Cara 16A (camping plug, blue) / safety plug16A		CEE16 (red) / CEE-Cara 16A (camping plug, blue) / safety plug16A					
	Nominal voltage	V		230/240	400/415	230/240	400/415	230/240	400/415	230/240	400/415
	Nominal current (configurable)	A		6–16 1-phase or 3-phase		6–32 1-phase or 3-phase		6–16 1-phase or 3-phase		6–32 1-phase or 3-phase	
	Mains frequency	Hz		50		50		50		50	
	Charging socket			Infrastructure-side Type 2 socket with mechanical locking							
	Residual current protection device ¹			20 mA AC, 6 mA DC integrated in device							
	Cable cross-section, supply line	mm ²		min. 2.5		min. 6		min. 2.5		min. 6	

¹An additional 30 mA AC Typ A residual current circuit breaker and an automatic circuit breaker must be connected upstream.

Technical data

		Wattpilot				
		Go 11 J	Go 22 J	Home 11 J	Home 22 J	
General data	PV optimization	Dynamic PV surplus charging with 1.38–11 kW (at 230/400 V, automatic 1-/3-phase switching)	Dynamic PV surplus charging with 1.38–22 kW (at 230/400 V, automatic 1-/3-phase switching)	Dynamic PV surplus charging with 1.38–11 kW (at 230/400 V, automatic 1-/3-phase switching)	Dynamic PV surplus charging with 1.38–22 kW (at 230/400 V, automatic 1-/3-phase switching)	
	Network connection ²	WLAN 802.11 b/g/n	WLAN 802.11 b/g/n	WLAN 802.11 b/g/n	WLAN 802.11 b/g/n	
	Communication protocols	OCPP 1.6 J	OCPP 1.6 J	OCPP 1.6 J	OCPP 1.6 J	
	Use ³	Indoors and outdoors				
	Type of installation	Suspended upright				
	Safety class	IP 65	IP 65	IP 65	IP 65	
	Standards/directives	EN IEC 61851-1 EN 62752 EN 62196	EN IEC 61851-1 EN 62752 EN 62196	EN IEC 61851-1 EN 62196	EN IEC 61851-1 EN 62196	
	Dimensions (L × W × H)	mm	287 × 155 × 109			
	Weight	kg	1.6	1.8	1.8	2.3
	Average temperature over ²⁴ h	°C	max. 35	max. 35	max. 35	max. 35
	Ambient temperature ⁴	°C	–25 to +40 (without direct sunlight)			
	Humidity	%	5–95	5–95	5–95	5–95
	Altitude above sea level	m	0–2000	0–2000	0–2000	0–2000
Impact resistance		IK08	IK08	IK08	IK08	

² Supported safety standards: WEP, WPA, WPA2, WPA3

³ When installed outdoors, the Wattpilot must not be exposed to direct sunlight.

⁴ Operation in temperatures in excess of 40°C can result in a reduction in charging performance

For more information, visit: www.fronius.com/wattpilot-en

Fronius International GmbH
Froniusplatz 1
4600 Wels
Austria
pv-sales@fronius.com
www.fronius.com

EN_US_V04_Apr 2023
Text and illustrations were accurate at the time of printing. Fronius reserves the right to make changes. All information published in this document, despite exercising the greatest of care in its preparation, is subject to change. No legal liability is accepted. Copyright © 2023 Fronius™. All rights reserved.