



¿CÓMO USAR LA APP VRM DE VICTRON ENERGY?



Rubén Avendaño
Departamento Técnico



EMAT
Materiales Fotovoltaicos

PANEL SOLAR INVERSORES CABLE SOLAR ESTRUCTURAS
PROTECCIONES PERNERÍA MEDIDORES BATERÍAS BOMBAS SOLARES



One Stop Shop
de energía solar



Asesoría técnica
y postventa



Logística rápida
a todo Chile



¿Qué es la aplicación VRM?

La aplicación VRM (disponible para dispositivos iOS y Android en App Store y Google Play, además de plataforma web) le permite monitorizar, controlar y gestionar su sistema de Victron Energy desde prácticamente cualquier lugar del mundo



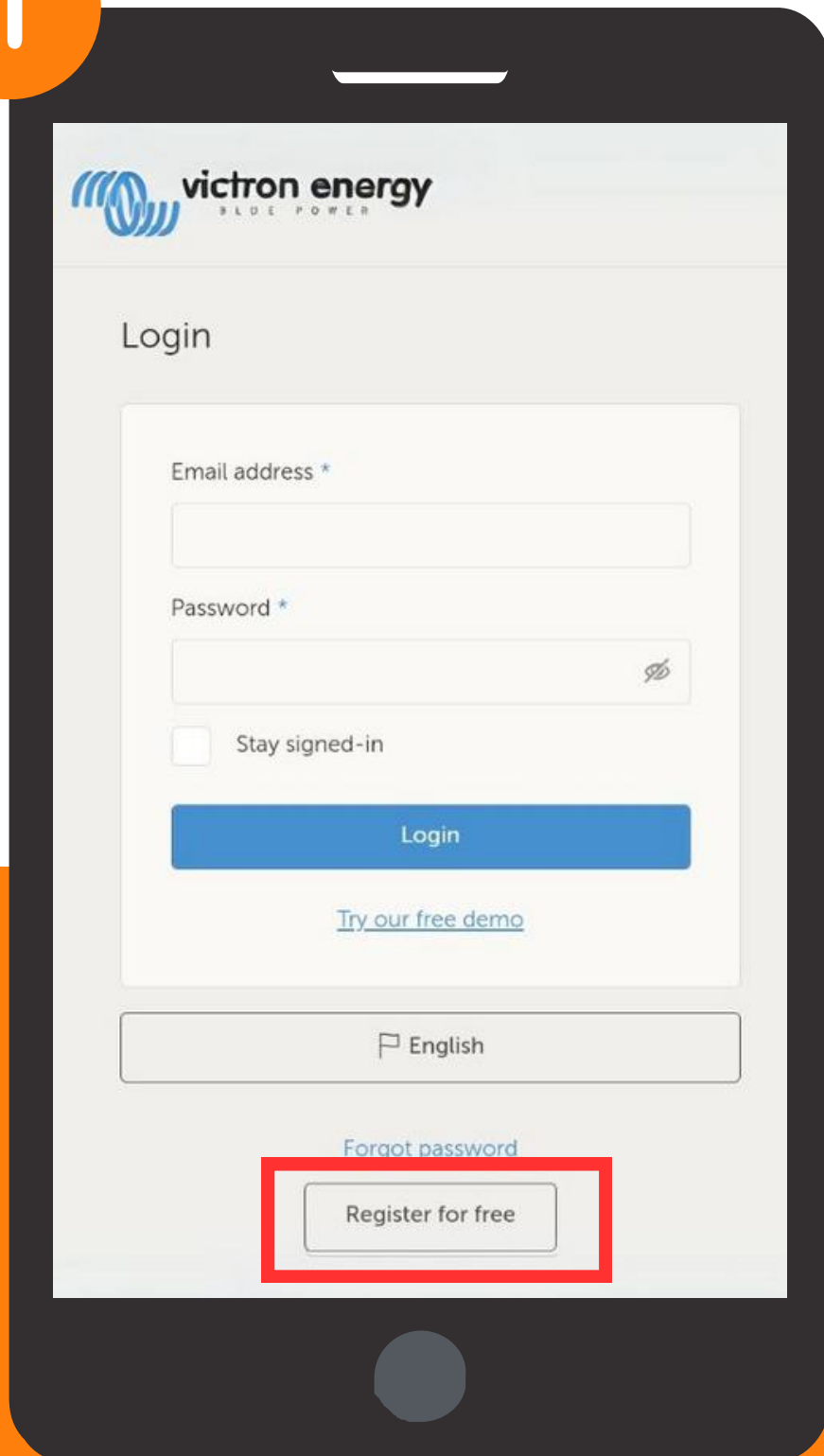
¿Para qué sirve la aplicación VRM?

- ✓ Monitoreo
- ✓ Actualización
- ✓ Control Remoto
- ✓ Análisis de fallas



¿Cómo crear un usuario en la App VRM?

1



victron energy
BLUE POWER

Login

Email address *

Password *

Stay signed-in

Login

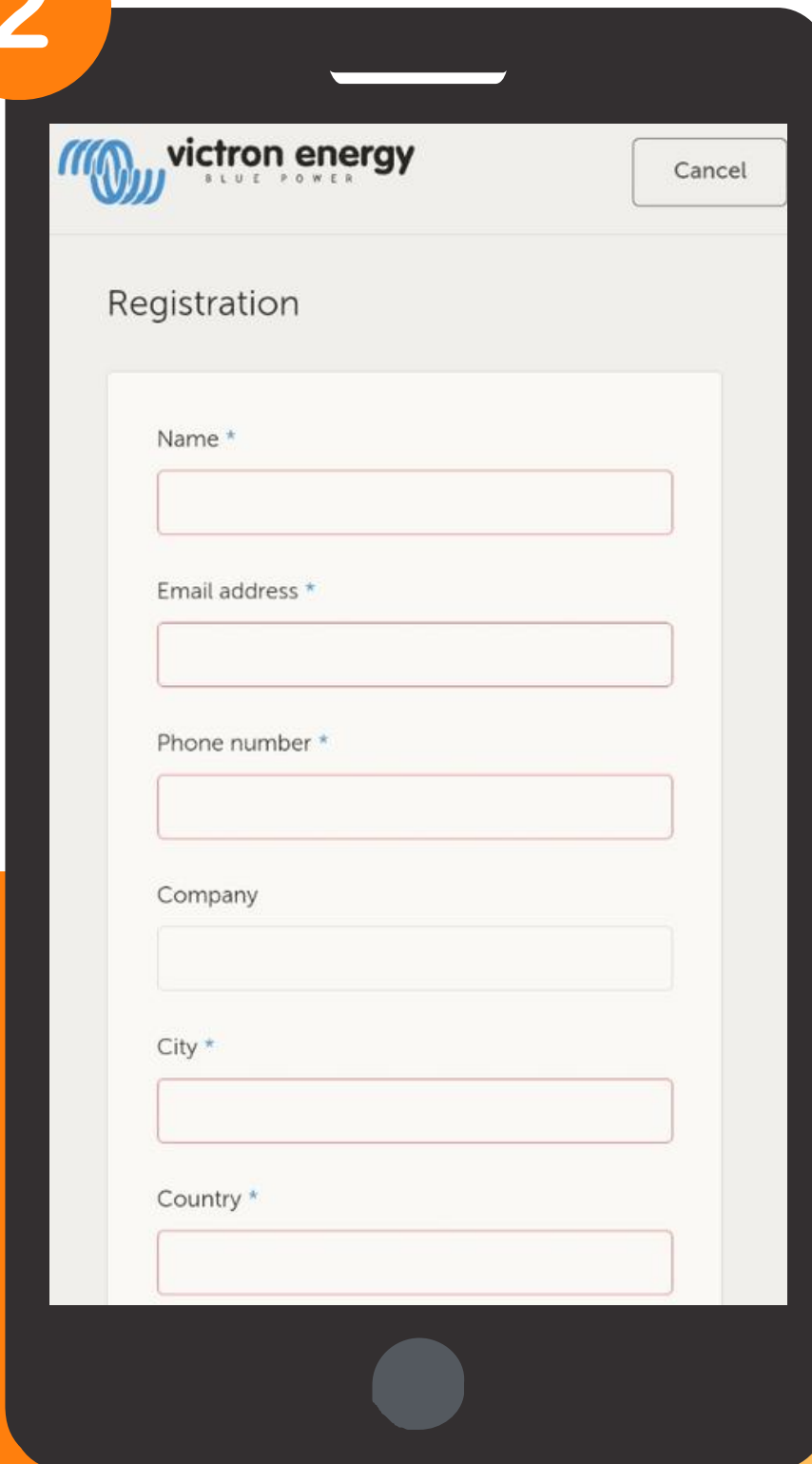
[Try our free demo](#)

English

[Forgot password](#)

Register for free

2



victron energy
BLUE POWER

Cancel

Registration

Name *

Email address *

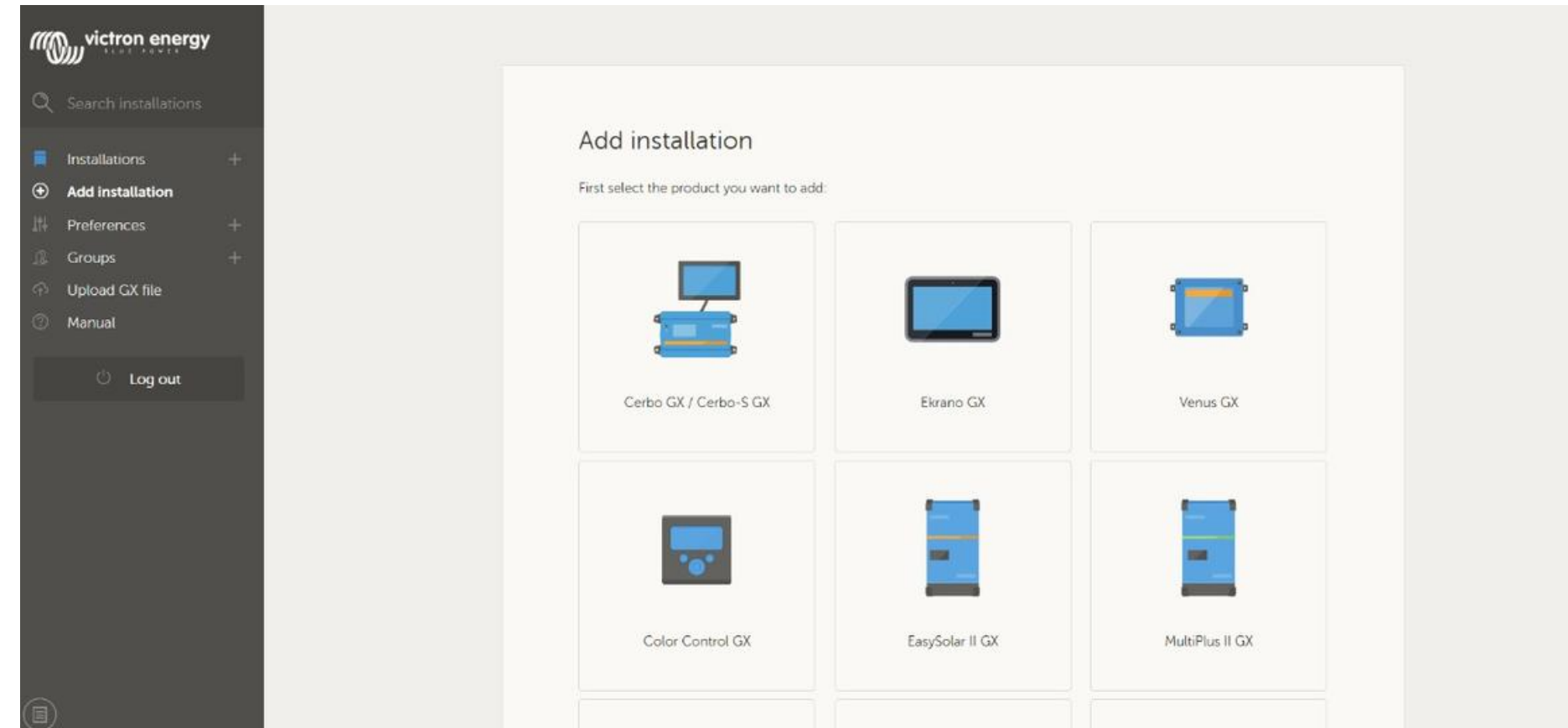
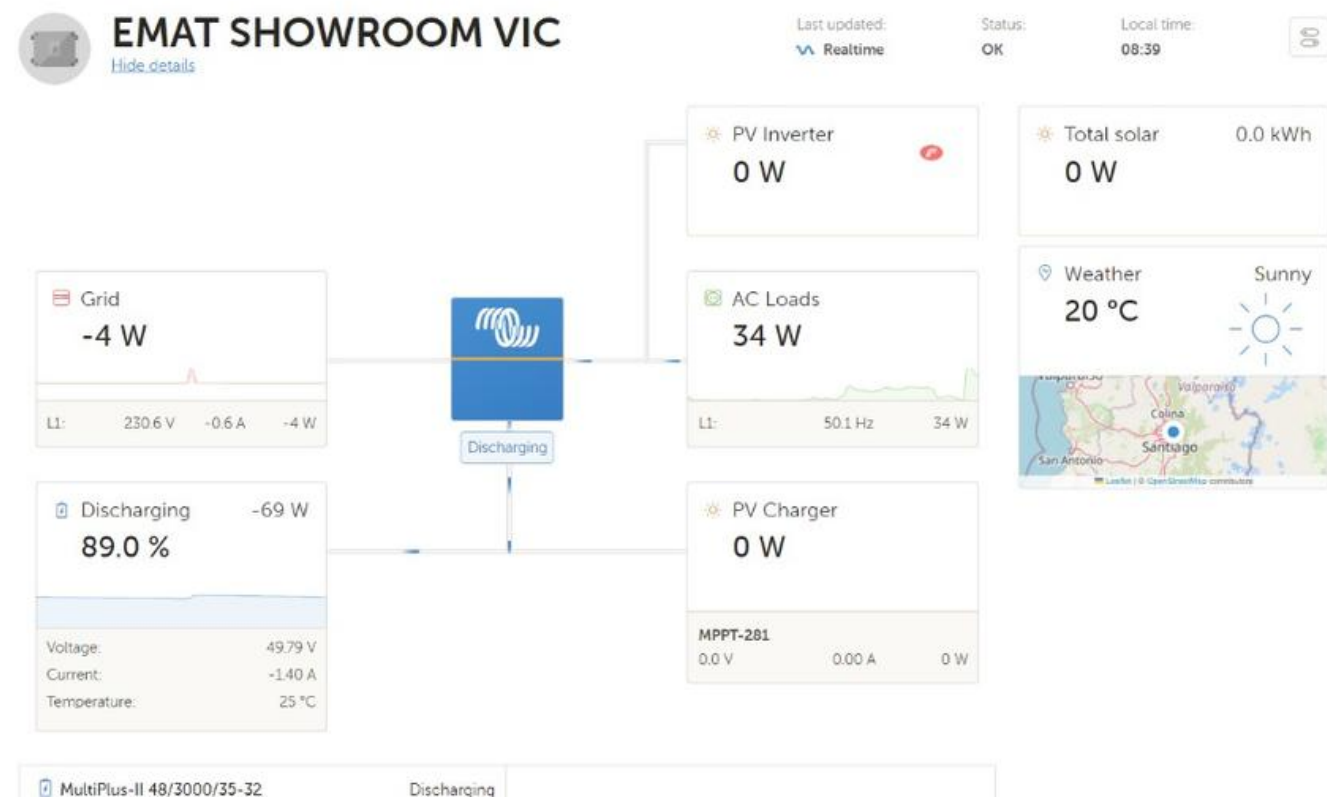
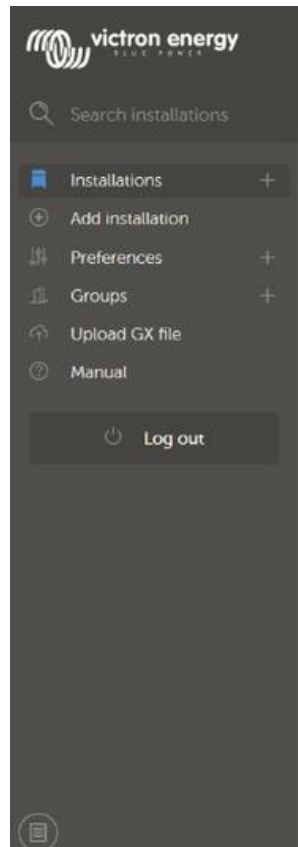
Phone number *

Company

City *

Country *

¿Cómo crear una planta en VRM?



Cerbo GX / Cerbo-S GX

Enter the VRM Portal ID below. Please make sure that:

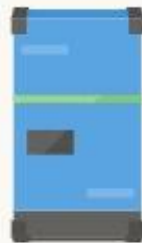
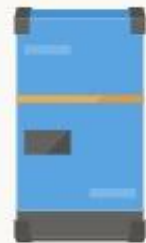
- a) Your installation is connected to the internet
- b) Or in case of an offline installation: upload your GX file first using the upload function [here](#)

Installation ID:

Installation name:

The VRM Portal ID, for example be300d83fff4, can be found on the GX device under Menu > Settings > VRM online portal.
For more information see our [Troubleshooting to VRM connectivity GX](#) or our [VRM Manual](#)

Connect



¿Cómo Añadir/Cambiar dispositivos a una planta?

Delete this installation

All data in the database will be deleted. Note that, after deleting, the device needs to be rebooted to resume sending data to the VRM portal. Use this option in case the GX device is moved to another installation.

Delete

Replace the GX device of this installation

Use this option in case the old GX device is defective and has been replaced by a new one.

Procedure

Step 1: install the new GX device, and then add it to VRM using the normal Add installation feature (<https://vrm.victronenergy.com/add-installation>). To make it easy, add NEW to the name while adding that installation.

Step 2: make a note of the VRM Portal ID of this new system.

Step 3: on the VRM Portal, select the installation that has all the data, go to Settings -> General (this page), and enter the VRM Portal ID of the new gateway and click replace.

Now, there is a single installation again, that still has the old data and all information as sent by the new device will be added to it.

VRM Portal ID of the new gateway: *

Replace


¿Cómo compartir una planta en VRM?

The screenshot displays the Victron Energy VRM interface for managing users and teams for an installation named "EMAT SHOWROOM VIC".

Left Sidebar:

- victron energy BLUE POWER logo
- Search installations
- BACK
- General
- Tags
- Location
- Geofence
- Users**
- Alarm rules
- Log out

Users for EMAT SHOWROOM VIC

User	Email	Full control
 Ruben Ali Avendaño Berrios	r.avendano@ematchile.com	<input checked="" type="checkbox"/>
		<input type="checkbox"/>

Pending invitations

Pending invitation	Email	Full control
No pending invites		

Teams for EMAT SHOWROOM VIC

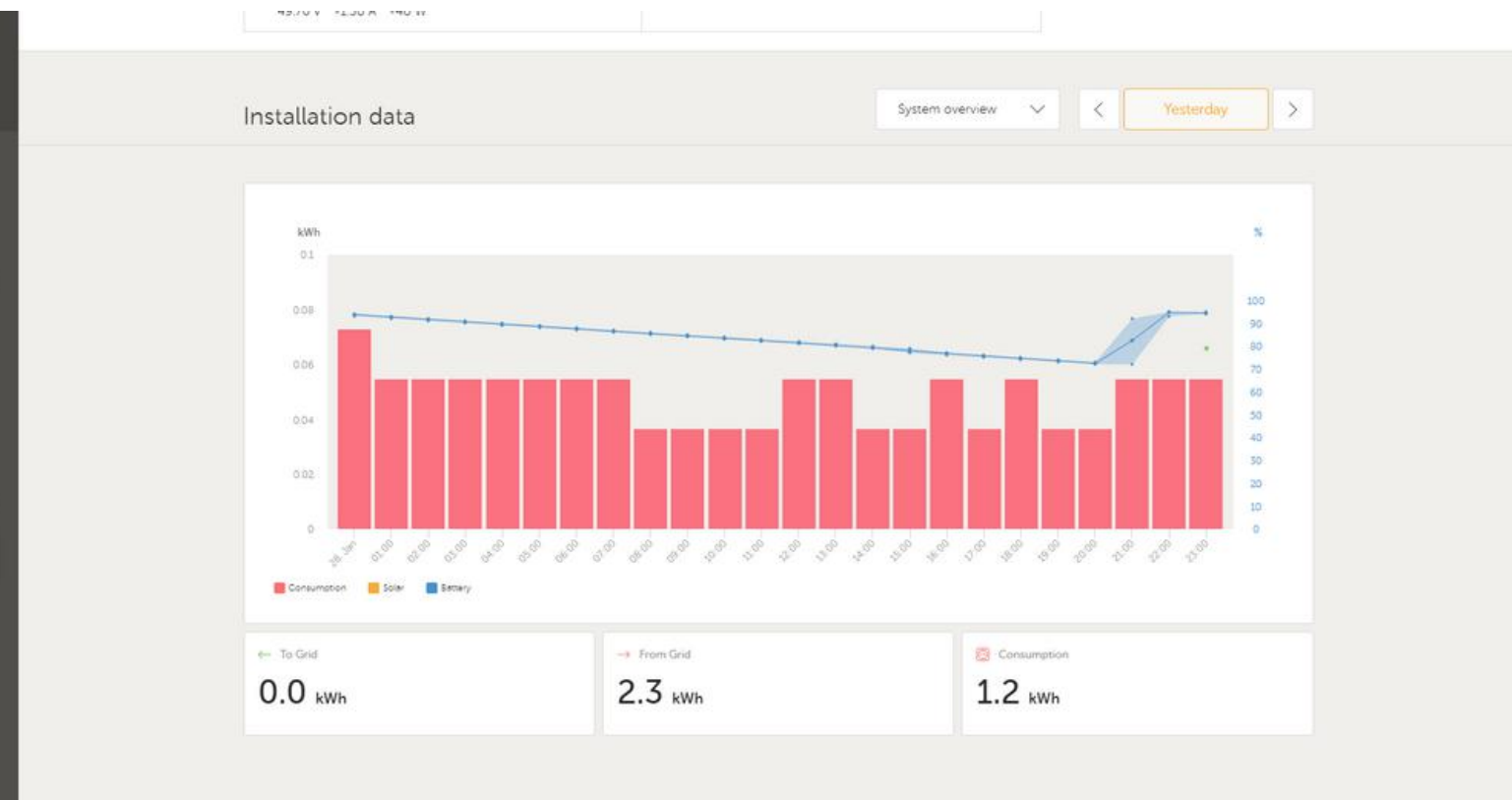
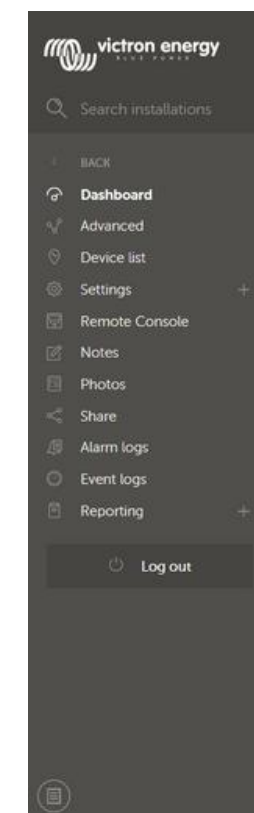
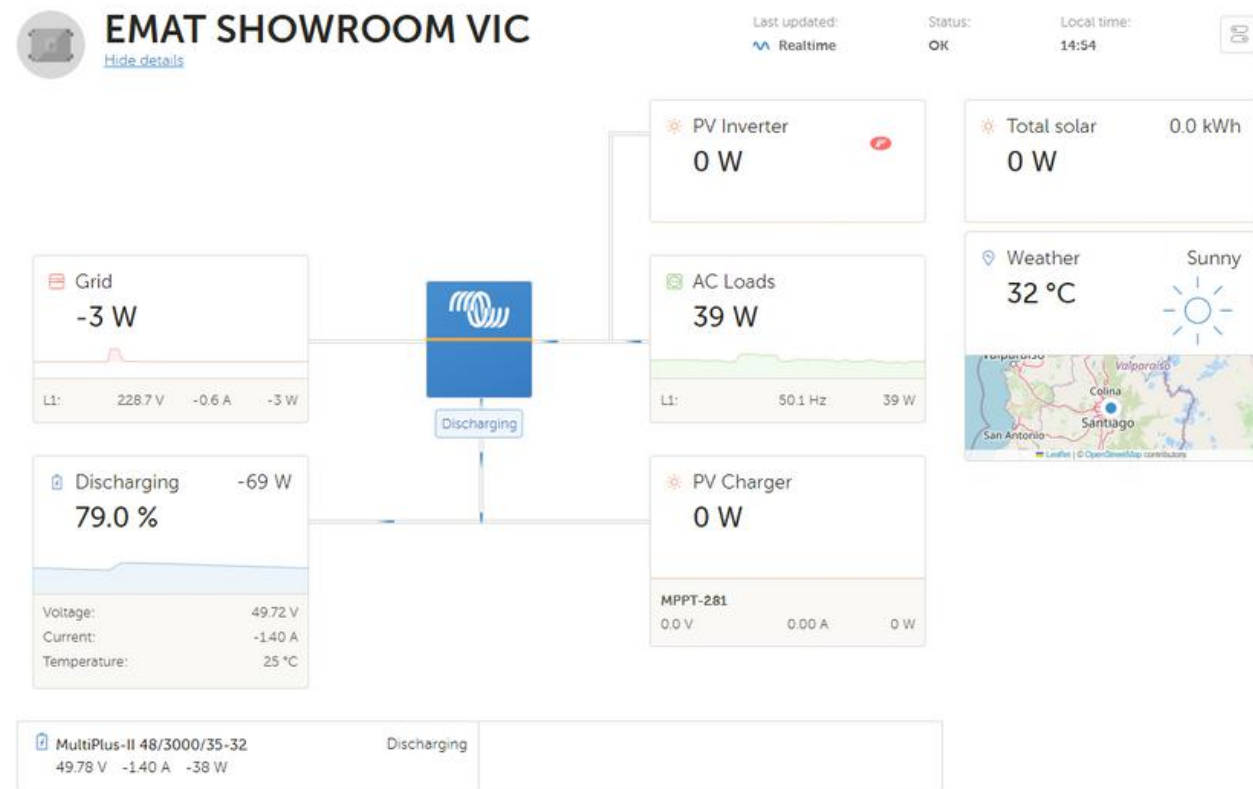
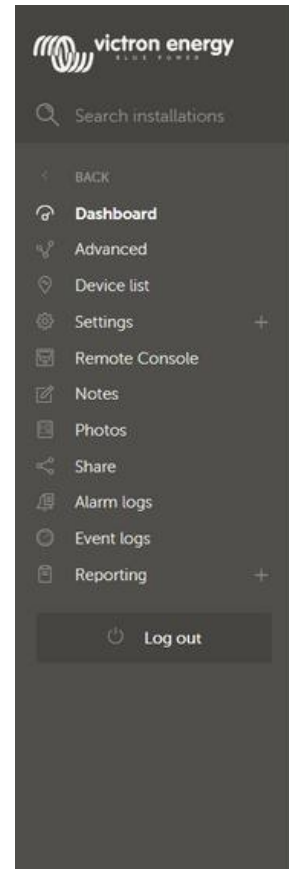
Teams	Members	Full control
No teams linked to this installation		

Buttons:

- Invite user
- Add teams

Installation groups with EMAT SHOWROOM VIC

Conociendo la aplicación VRM



EMAT SHOWROOM VIC

Last updated: Realtime Status: OK

PV Inverter 0 W Total sol 0 W

Weather 32 °C

Red eléctrica 6W

Descargando 79% -59W 49.7V -1.2A

Cargas CA 39W

Inversor FV 0W

Cargador FV 0W

EMAT SHOWROOM VIC Remote Console

Voltage: 49.72 V
Current: -1.20 A
Temperature: 25 °C

MPPT-281 0.0 V 0.00 A 0 W

MultiPlus-II 48/3000/35-32 Discharging 49.78 V -1.40 A -31 W

victron energy BLUE POWER

Search installations

- BACK
- Dashboard
- Advanced
- Device list
- Settings
- Remote Console
- Notes
- Photos
- Share
- Alarm logs
- Event logs
- Reporting

Log out

Device list for EMAT SHOWROOM VIC

First seen: 2022-07-15 14:37:48

Gateway	Last seen a few seconds ago	+
VE Bus System	Last seen a few seconds ago	+
Battery Monitor	Last seen a few seconds ago	+
Solar Charger	Last seen a few seconds ago	+
PV Inverter	Last seen a few seconds ago	+
AC Meter	Last seen a few seconds ago	+

Remote VEConfigure

Would you like to download and upload Remote VEConfigure files from and to the devices connected to your GX device?

Remote VEConfigure

Firmware Update

Would you like to update the firmware of the devices connected to your GX device?

Firmware Update

victron energy

Search installations

- BACK
- Dashboard
- Advanced
- Device list**
- Settings
- Remote Console
- Notes
- Photos
- Share
- Alarm logs
- Event logs
- Reporting

Log out

Device list for EMAT SHOWROOM VIC

First seen: 2022-07-15 14:37:48

- Gateway Last seen a minute ago
- VE.Bus System Last seen a minute ago
- Battery Monitor Last seen a minute ago
- Solar Charger Last seen a minute ago
- PV Inverter Last seen a minute ago

Product: MultiPlus-II 48/3000/35-32 (ACOut2 switchable)

Firmware version: 508

Last connection: a minute ago

Product id: 2629

VE.Bus connection: VE.Bus

Hardware configuration: Single unit

VRM instance: 276

Serial numbers

Device type	Last update	Serial number
Phase 1 Master	2024-01-24	HQ2247HV6T6

[Delete device](#)

victron energy

Search installations

- BACK
- General
- Tags
- Location
- Geofence
- Users
- Alarm rules

Log out

EMAT SHOWROOM VIC

Last updated: Realtime Status: OK Local time: 14:58

Grid
5 W

LT: 229.6 V 0.5 A 1 W

PV Inverter
0 W

Total solar
0 W


Discharging
-69 W
78.0 %

Voltage: 49.73 V
Current: -1.40 A
Temperature: 25 °C

AC Loads
39 W

LT: 49.9 Hz 39 W

Weather
32 °C
Sunny



PV Charger
0 W

MPPT-281
0.0 V 0.00 A 0 W

MultiPlus-II 48/3000/35-32
49.78 V -1.30 A -39 W

Discharging

Alarms for EMAT SHOWROOM VIC

	Communication disconnected	Alarm disarmed	
	Automatic alarm monitoring	Only alarms	

Alarm logs **Add new alarm rule**

Alarm notification settings per user ⓘ

	Felix Salazar	f.salazar@ematchile.com	<input checked="" type="checkbox"/>
	Ruben Ali Avendaño Berrios	r.avendano@ematchile.com	<input checked="" type="checkbox"/>

General Settings


Currency *
Euro - € (EUR)

Realtime updates
Toggle realtime updates for this installation.

Inverter/Charger Control
Toggle Inverter/Charger control for this installation. By turning this on, you will be able to remotely control your inverter's current limit as well as switch it on, off and to charger-only from the [Control Panel](#) on the VRM Dashboard.

Enabling this option is not recommended for mission critical applications. This option will allow a VRM user to shut the system down and change current limits which could affect system stability.

Installation avatar



Search installations

- BACK
- General
- Tags
- Location
- Geofence
- Users**
- Alarm rules
- Log out

Users for EMAT SHOWROOM VIC

User	Email	Full control
FS Felix Salazar	f.salazar@ematchile.com	<input checked="" type="checkbox"/>
RB Ruben Ali Avendaño Berrios	r.avendano@ematchile.com	<input type="checkbox"/>

Pending invitations

Pending invitation	Email	Full control
No pending invites		


[Invite user](#)

Teams for EMAT SHOWROOM VIC

Teams	Members	Full control
No teams linked to this installation		

[Add teams](#)

Installation groups with EMAT SHOWROOM VIC



Search installations

- BACK
- Dashboard
- Advanced
- Device list
- Settings
- Remote Console
- Notes
- Photos
- Share
- Alarm logs**
- Event logs
- Reporting
- Log out

Alarm logs for EMAT SHOWROOM VIC

Last updated: **Realtime** Status: **OK** Local time: **15:01**

Instance	Device	Description	Alarm started at	Alarm cleared after
276	VE.Bus System [276]	VE.Bus Error: VE.Bus Error 11: Relay test fault	2024-01-24 15:16:56	32s
276	System overview [276]	Grid alarm: Grid lost	2024-01-24 15:13:27	4m, 45s
276	VE.Bus System [276]	Low battery: Alarm	2023-11-23 11:48:58	34s
276	VE.Bus System [276]	BMS lost: Alarm	2023-11-23 11:38:51	8m, 59s
276	VE.Bus System [276]	Low battery: Alarm	2023-11-23 11:38:51	9m, 21s
276	VE.Bus System [276]	VE.Bus Error: VE.Bus Error 6: Error in DDC Program	2023-11-20 14:05:01	1m, 28s
276	VE.Bus System [276]	VE.Bus Error: VE.Bus Error 6: Error in DDC Program	2023-11-20 13:52:00	12m, 51s
276	VE.Bus System [276]	Low battery: Alarm	2023-11-20 13:43:42	20m, 53s
276	VE.Bus System [276]	VE.Bus Error: VE.Bus Error 6: Error in DDC Program	2023-11-20 13:43:40	8m, 13s
276	VE.Bus System [276]	VE.Bus Error: VE.Bus Error 6: Error in DDC Program	2023-11-20 13:26:46	16m, 56s
276	VE.Bus System [276]	VE.Bus Error: VE.Bus Error 15	2023-11-20 13:25:41	27s
276	VE.Bus System [276]	VE.Bus Error: VE.Bus Error 15	2023-11-20 13:24:35	26s

victron energy
BLUE POWER

Search installations

- BACK
- Dashboard
- Advanced
- Device list
- Settings
- Remote Console
- Notes
- Photos
- Share
- Alarm logs
- Event logs**
- Reporting

Log out

Event logs for EMAT SHOWROOM VIC

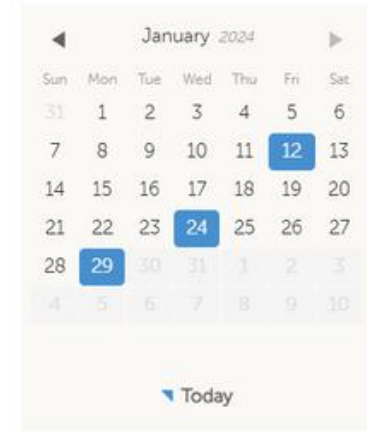
Last updated: **Realtime** Status: **OK** Local time: **15:02**

January

- Monday 29 January
- Remote Console** - Remote console accessed by 'Ruben Ali Avendaño Berrios' 14:56
- Wednesday 24 January
- Automatic monitoring alarm** - VE.Bus Error: VE.Bus Error 11: Relay test fault VE.Bus System [276] 15:16
 - Automatic monitoring alarm** - Grid alarm: Grid lost System overview [276] 15:13
 - Remote VEConfigure upload** - VEConfigure file uploaded 14:30
 - Remote VEConfigure upload** - VEConfigure file uploaded 14:25
 - Firmware update** - Ruben Ali Avendaño Berrios - Update firmware for MultiPlus-II 48/3000/35-32 (ACOut2 switchable) from version '506' to version '508' 14:15

Quick Action

Select a date to see the events:



On this day
1x Remote Console

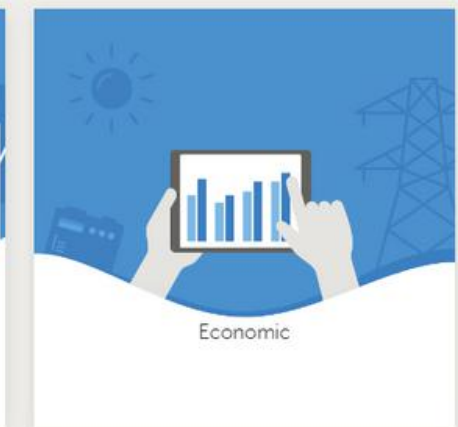
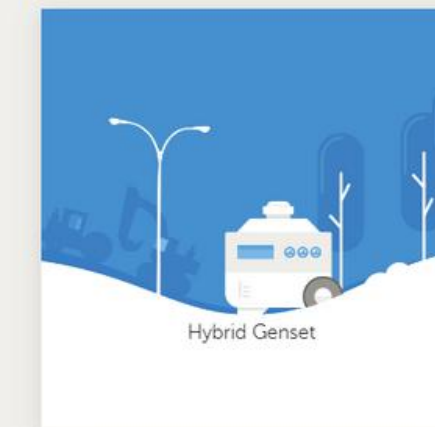
victron energy
BLUE POWER

Search installations

- BACK
- Reporting**
- Recurring reports
- Templates

Log out

Select a report



victron energy
Smart Power

Search installations

BACK

Reporting

Recurring reports

Templates

Log out

Hybrid Genset report for EMAT SHOWROOM VIC

Fill in the scenario data below to generate a hybrid genset report.

1. Select period and currency

From: 2024-01-01 To: 2024-01-29

Currency: Euro (€)

2. Enter scenario parameters

Diesel usage per hour: 10 L

Liter diesel price: 1 €

Download .pdf Save template

victron energy
Smart Power

Search installations

BACK

Dashboard

Advanced

Device list

Settings

Remote Console

Notes

Photos

Share

Alarm logs

Event logs

Reporting

Log out

Advanced for EMAT SHOWROOM VIC

Today

Last updated: Realtime Status: OK Local time: 15:03

System - AC Consumption

AC Consumption L1 (W)

System - Grid

Grid L1 (W)

VE.Bus DC Voltage And Current [276]

Voltage (V) Current (A)

AC Input Voltage And Current [276]

Input voltage phase 1 (V) Input current phase 1 (A)

237.5 1

AC Output Voltage And Current [276]

Output voltage phase 1 (V) Output current phase 1 (A)

237.5 1.5

victron energy
Search installations

BACK
Dashboard
Advanced
Device list
Settings
Remote Console
Notes
Photos
Share
Alarm logs
Event logs
Reporting
Log out

Select the info you would like to see:

	Gateway	14 widgets	Last seen a minute ago	+
	VE Bus System [276]	11 widgets	Last seen a minute ago	+
	Battery Monitor [512]	8 widgets	Last seen a minute ago	+
	Solar Charger [281]	6 widgets	Last seen a minute ago	+
	PV Inverter [20]	2 widgets	Last seen a minute ago	+
	AC Meter [31]	1 widget	Last seen a minute ago	+
	Custom Widget	0 widgets		

Copy and paste the widget layout to other installations, or import the layout of another installation here:

Copy current layout Clone another installation's layout

victron energy
Search installations

BACK
Dashboard
Advanced
Device list
Settings
Remote Console
Notes
Photos
Share
Alarm logs
Event logs
Reporting
Log out

Select the info you would like to see:

	Gateway	14 widgets	Last seen a minute ago	-
<input checked="" type="checkbox"/>	System - AC Consumption			
<input checked="" type="checkbox"/>	System - Grid			
	Solar Irradiance			
	System - AC Genset			
	System - Battery Power			
	System - Battery Voltage And Current			
	System - Battery SOC (State of Charge)			
	System - DC System			
	System - PV Yield			
	Generator State			
	System - Relay 1 State			
	Relay 2 State			
	System - ESS battery life state			
	System - Critical Loads			
	VE Bus System [276]	11 widgets	Last seen a minute ago	+
	Battery Monitor [512]	8 widgets	Last seen a minute ago	+
	Solar Charger [281]	6 widgets	Last seen a minute ago	+
	PV Inverter [20]	2 widgets	Last seen a minute ago	+
	AC Meter [31]	1 widget	Last seen a minute ago	+
	Custom Widget	0 widgets		

victron energy
BLUE POWER

Search installations

- Installations +
- Add installation +
- Preferences +
- Groups +
- Upload GX file
- Manual

Log out

EMAT SHOWROOM VIC

[Hide details](#)

Last updated: **Realtime** Status: **OK** Local time: **15:13**

